

RESEARCH ARTICLE

A comparison of design-based and model-based approaches for finite population spatial sampling and inference

Michael Dumelle¹  | Matt Higham² | Jay M. Ver Hoef³  | Anthony R. Olsen¹ | Lisa Madsen⁴

¹United States Environmental Protection Agency, Corvallis, OR, USA

²St. Lawrence University Department of Mathematics, Computer Science, and Statistics, Canton, NY, USA

³Marine Mammal Laboratory, Alaska Fisheries Science Center, National Oceanic and Atmospheric Administration, Seattle, WA, USA

⁴Oregon State University Department of Statistics, Corvallis, OR, USA

Correspondence

Michael Dumelle

Email: dumelle.michael@epa.gov

Funding information

National Oceanic and Atmospheric Administration; U.S. Environmental Protection Agency

Handling Editor: Torbjørn Ergon

Abstract

1. The design-based and model-based approaches to frequentist statistical inference rest on fundamentally different foundations. In the design-based approach, inference relies on random sampling. In the model-based approach, inference relies on distributional assumptions. We compare the approaches in a finite population spatial context.
2. We provide relevant background for the design-based and model-based approaches and then study their performance using simulated data and real data. The real data are from the United States Environmental Protection Agency's 2012 National Lakes Assessment. A variety of sample sizes, location layouts, dependence structures, and response types are considered. The population mean is the parameter of interest, and performance is measured using statistics like bias, squared error and interval coverage.
3. When studying the simulated and real data, we found that regardless of the strength of spatial dependence in the data, the generalized random tessellation stratified (GRTS) algorithm, which explicitly incorporates spatial locations into sampling, tends to outperform the simple random sampling (SRS) algorithm, which does not explicitly incorporate spatial locations into sampling. We also found that model-based inference tends to outperform design-based inference, even for skewed data where the model-based distributional assumptions are violated. The performance gap between design-based inference and model-based inference is small when GRTS samples are used but large when SRS samples are used, suggesting that the sampling choice (whether to use GRTS or SRS) is most important when performing design-based inference.
4. There are many benefits and drawbacks to the design-based and model-based approaches for finite population spatial sampling and inference that practitioners must consider when choosing between them. We provide relevant background contextualizing each approach and study their properties in a variety of scenarios, making recommendations for use based on the practitioner's goals.

KEYWORDS

design-based inference, finite population block kriging (FPBK), generalized random tessellation stratified (GRTS) algorithm, local neighbourhood variance estimator, model-based inference, restricted maximum likelihood (REML) estimation, spatial covariance, spatially balanced sampling

1 | INTRODUCTION

When data cannot be collected for all units in a population (population units), data are collected on a subset of the population units—this subset is called a sample. There are two general approaches for using samples to make frequentist statistical inferences about a population: design-based and model-based. In the design-based approach, inference relies on randomly assigning some population units to be in the sample (random sampling). Alternatively, in the model-based approach, inference relies on distributional assumptions about the underlying data-generating stochastic process (superpopulation). Each paradigm has a deep historical context (Sterba, 2009) and its own set of benefits and drawbacks (Brus & De Gruijter, 1997; Hansen et al., 1983). In this manuscript, we compare design-based and model-based approaches for finite population spatial sampling and inference.

Spatial data are data that have some sort of spatial index (usually specified via coordinates). De Gruijter and Ter Braak (1990) and Brus and DeGruijter (1993) give early comparisons of design-based and model-based approaches for spatial data, quashing the belief that design-based approaches could not be used for spatially correlated data. Since then, there have been several general comparisons between design-based and model-based approaches for spatial data (Brus, 2021; Brus & De Gruijter, 1997; Ver Hoef, 2002, 2008). Cooper (2006) reviews the two approaches in an ecological context before introducing a 'model-assisted' variance estimator that combines aspects from each approach. In addition to Cooper (2006), there has been substantial research and development into estimators that use both design-based and model-based principles (see e.g., Sterba (2009) and Cicchitelli and Montanari (2012), and for Bayesian approaches, see Chan-Golston et al. (2020) and Hofman and Brus (2021)).

While comparisons between design-based and model-based approaches have been studied in spatial contexts, our contribution is comparing design-based approaches specifically built for spatial data to model-based approaches. Though the broad comparisons we draw between design-based and model-based approaches generalize to finite and infinite populations, we focus on finite populations. A finite population contains a finite number of population units (we assume the finite number is known)—an example is lakes (treated as a whole with the lake centroid representing location) in the conterminous United States. An infinite population contains an infinite number of population units—an example is locations within a single lake.

The rest of the manuscript is organized as follows. In Section 1.1, we introduce and provide relevant background for design-based and model-based approaches to finite population spatial sampling and

inference. In Section 2, we describe how we intend to compare performance of the approaches using simulated and real data. The real data are from the United States Environmental Protection Agency's 2012 National Lakes Assessment (NLA) (USEPA, 2012). In Section 3, we present analysis results for the simulated data and real data. In Section 4, we end with a discussion and provide directions for future research.

1.1 | Background

The design-based and model-based approaches incorporate randomness in fundamentally different ways. In this section, we describe the role of randomness for each approach and the subsequent effects on statistical inferences for spatial data.

1.1.1 | Comparing design-based and model-based approaches

The design-based approach assumes the population is fixed. Randomness is incorporated via the selection of population units according to a sampling design. A sampling design assigns a probability of selection to each sample (subset of population units). Some examples of commonly used sampling designs include simple random sampling, stratified random sampling and cluster sampling. The inclusion probability of a population unit is calculated by summing each sample's probability of selection over all samples that contain the population unit. Inclusion probabilities are often used when selecting samples and estimating population parameters.

When samples are chosen in a manner such that the layout of sampled units reflects the layout of the population units, we call the resulting sample spatially balanced. By 'reflecting the layout of the population units,' we mean that if population units are concentrated in specific areas, the units in the sample should be concentrated in the same areas. Because spatially balanced samples reflect the layout of the population units, they are not necessarily spread out in space in some equidistant manner. One method of selecting spatially balanced samples is the generalized random tessellation stratified (GRTS) algorithm (Stevens & Olsen, 2004), which we discuss in more detail in Section 1.1.2. To quantify the spatial balance of a sample, Stevens and Olsen (2004) proposed loss metrics based on Voronoi polygons (i.e., Dirichlet Tessellations).

Fundamentally, the design-based approach combines the randomness of the sampling design with the data collected via the sample to justify the estimation and uncertainty quantification of fixed, unknown parameters of a population (e.g., a population mean).

Treating the data as fixed and incorporating randomness through the sampling design yields estimators having very few other assumptions. Confidence intervals for these types of estimators are typically derived using limiting arguments that incorporate all possible samples. Sample means, for example, are asymptotically normal (Gaussian) by the central limit theorem (under some assumptions). If we repeatedly select samples from the population, then 95% of all 95% confidence intervals constructed from a procedure with appropriate coverage will contain the true fixed population mean. Särndal et al. (2003) and Lohr (2009) provide thorough reviews of the design-based approach.

The model-based approach assumes the population is a random realization of a data-generating stochastic process. Randomness is formally incorporated through distributional assumptions on this process. Strictly speaking, randomness need not be incorporated through random sampling, though Diggle et al. (2010) warn against preferential sampling. Preferential sampling occurs when the process generating the data locations and the process being modelled are not independent of one another. To guard against preferential sampling, model-based approaches can implement some form of random sampling. It is common, however, for model-based approaches to sample non-randomly. When model-based approaches do implement random sampling, the inclusion probabilities are ignored when analysing the sample (in contrast to the design-based approach, which relies on these inclusion probabilities to analyse the sample).

Instead of estimating fixed, unknown population parameters, as in the design-based approach, often the goal of model-based inference is to predict the value of a realized variable. For example, suppose the realized mean of all population units (the realized population mean) is the variable of interest. Instead of a fixed, unknown mean, we are predicting the value of the mean, a random variable. Prediction intervals are then derived using assumptions of the data-generating stochastic process. If we repeatedly generate realizations

from the same process and select samples, then 95% of all 95% prediction intervals constructed from a procedure with appropriate coverage will contain their respective realized means. Cressie (1993) and Schabenberger and Gotway (2017) provide thorough reviews of model-based approaches for spatial data. In Figure 1, we provide a visual comparison of the design-based and model-based approaches (Ver Hoef (2002) and Brus (2021) provide similar figures). Figure 1 contrasts the design-based approach with a fixed population and random sampling to the model-based approach with random populations and non-random sampling.

1.1.2 | Spatially balanced design and analysis

We previously mentioned that the design-based approach can be used to select spatially balanced samples. Spatially balanced samples are useful because parameter estimates from these samples tend to vary less (be more precise) than parameter estimates from samples lacking spatial balance (Barabesi & Franceschi, 2011; Benedetti et al., 2017; Grafström & Lundström, 2013; Robertson et al., 2013; Stevens & Olsen, 2004; Wang et al., 2013). The first spatially balanced sampling algorithm to see widespread use was the generalized random tessellation stratified (GRTS) algorithm (Stevens & Olsen, 2004). After the GRTS algorithm was developed, several other spatially balanced sampling algorithms emerged, including stratified sampling with compact geographical strata (Walvoort et al., 2010), the local pivotal method (Grafström et al., 2012; Grafström & Matei, 2018), spatially correlated Poisson sampling (Grafström, 2012), balanced acceptance sampling (Robertson et al., 2013), within-sample-distance sampling (Benedetti & Piersimoni, 2017), and Halton iterative partitioning sampling (Robertson et al., 2018). In this manuscript, we select spatially balanced samples using the GRTS algorithm because it is readily available in the *spsurvey* R package (Dumelle, Kincaid, et al., 2022) and naturally accommodates finite and infinite sampling

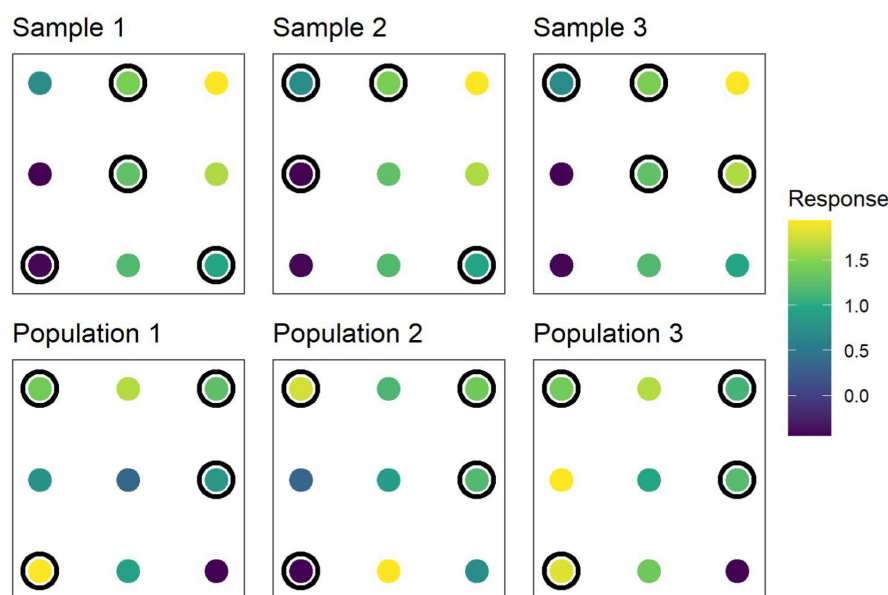


FIGURE 1 A visual comparison of the design-based and model-based approaches. In the top row, the design-based approach is highlighted. There is one fixed population with nine population units and three random samples of size four (points circled are those sampled). The response values at each site are fixed. In the bottom row, the model-based approach is highlighted. There are three realizations of the same data-generating stochastic process that are all sampled at the same four locations. The response values at each site are random.

frames, unequal inclusion probabilities, and replacement units. Replacement units are additional population units that can be sampled when a population unit originally selected can no longer be sampled. A couple of reasons why an originally selected site can no longer be sampled include its location being physically inaccessible or it is on private land that the researcher does not have permission to access.

The GRTS algorithm selects samples by utilizing a particular mapping between two-dimensional and one-dimensional space that preserves proximity relationships. First, the bounding box of the domain is split up into four distinct, equally sized squares called level-one cells. Each level-one cell is randomly assigned a level-one address of 0, 1, 2, or 3. The set of level-one cells is denoted by \mathcal{A}_1 and defined as $\mathcal{A}_1 \equiv \{a_1: a_1 = 0, 1, 2, 3\}$. Within each level-one cell, the inclusion probability for each population unit (which is pre-specified) is summed, and if any of these sums are one or greater, a second level of cells is added. Then each level-one cell is split into four distinct, equally sized squares called level-two cells. Each level-two cell is randomly assigned a level-two address of 0, 1, 2 or 3. The set of level-two cells is denoted by \mathcal{A}_2 and defined as $\mathcal{A}_2 \equiv \{a_1 a_2: a_1 = 0, 1, 2, 3; a_2 = 0, 1, 2, 3\}$. The inclusion probabilities within each level-two cell are summed, and if any of these sums are one or greater, a third level of cells is added. This process continues for k steps, until all level- k cells have inclusion probability sums less than one. Then $\mathcal{A}_k \equiv \{a_1 \dots a_k: a_1 = 0, 1, 2, 3, \dots; a_k = 0, 1, 2, 3\}$. Figure 2 provides some intuition regarding the assignment of level-one and level-two cells.

After determining \mathcal{A}_k , the set is placed into hierarchical order. Hierarchical order is a numeric order that first sorts \mathcal{A}_k by the level-one addresses from smallest to largest, then sorts \mathcal{A}_k by the level-two addresses from smallest to largest, and so on. For example, \mathcal{A}_2 in hierarchical order is the set {00, 01, 02, 03, 10, ..., 13, 20, ..., 23, 30, ..., 33}. Because hierarchical ordering sorts by level-one cells, then level-two cells, and so on, population units that have similar hierarchical addresses tend to be nearby one another in space. Next, each population unit is mapped to a one-dimensional line in hierarchical order where each population unit's inclusion probability equals its line-length. If a level- k cell has multiple population units in it, they are randomly placed within the cell's respective line segment. A uniform random variable is then simulated in [0, 1] and a systematic sample is selected on the line, yielding n sample points for a sample size n . Each of these sample points falls on some population unit's line segment, and thus that population unit is selected in the sample. For further details regarding the GRTS algorithm, see Stevens and Olsen (2004).

After selecting a sample and collecting data, unbiased estimates of population means and totals can be obtained using the Horvitz-Thompson estimator (Horvitz & Thompson, 1952). If τ is a population total, the Horvitz-Thompson estimator for τ , denoted by $\hat{\tau}_{ht}$, is given by

$$\hat{\tau}_{ht} = \sum_{i=1}^n z_i \pi_i^{-1}, \quad (1)$$

where z_i is the value of the i th population unit in the sample, π_i is the inclusion probability of the i th population unit in the sample and n is the sample size. An estimate of the population mean is obtained by dividing $\hat{\tau}_{ht}$ by N , the number of population units.

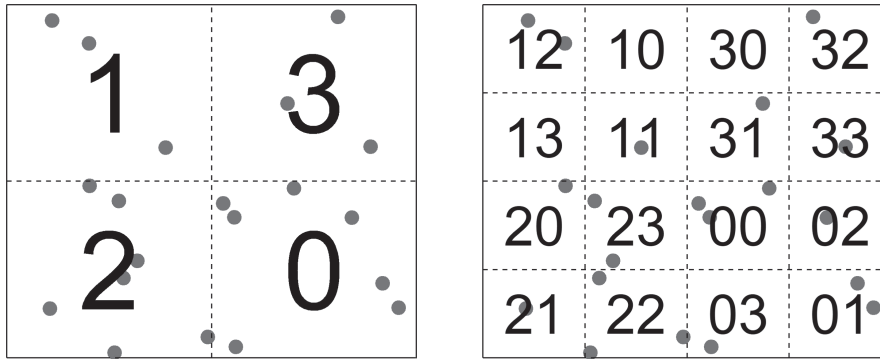
It is also important to quantify the uncertainty in $\hat{\tau}_{ht}$. The Horvitz-Thompson (Horvitz & Thompson, 1952) and Sen-Yates-Grundy (Sen, 1953; Yates & Grundy, 1953) variance estimators are often used to estimate $\text{Var}(\hat{\tau}_{ht})$, but these estimators have two drawbacks. First, they rely on calculating π_{ij} , the probability that population unit i and population unit j are both in the sample—this quantity can be challenging if not impossible to calculate analytically for GRTS samples. Second, these estimators tend to ignore the spatial locations of the population units. To address these two drawbacks simultaneously, Stevens and Olsen (2003) proposed the local neighbourhood variance estimator. The local neighbourhood variance estimator does not rely on π_{ij} and estimates the variance of $\hat{\tau}$ conditional on the random properties of the GRTS sample—the idea being that this conditioning should yield a more precise estimate of τ . They show that the contribution from each sampled population unit to the overall variance is dominated by local variation. Thus the local neighbourhood variance estimator is a weighted sum of variance estimates from each sampled population unit's local neighbourhood. These local neighbourhoods contain the sampled population unit itself and its three nearest neighbours (among all other sampled population units). For more details, see Stevens and Olsen (2003).

1.1.3 | Finite population block kriging

Finite population block kriging (FPBK) is a model-based approach that expands the geostatistical Kriging framework to the finite population setting (Ver Hoef, 2008). Instead of developing inference based on a specific sampling design, we assume the data are generated by a spatial stochastic process. We summarize some of the basic principles of FPBK next—see Ver Hoef (2008) for technical details and see Higham, Ver Hoef, Madsen, and Aderman (2021) for an extension to cases of imperfect detection among population units. Let $\mathbf{z} \equiv \{z(s_1), z(s_2), \dots, z(s_N)\}$ be an $N \times 1$ response vector at locations s_1, s_2, \dots, s_N that can be measured at the N population units. Suppose we want to use a sample to predict some linear function of the response variable, $f(\mathbf{z}) = \mathbf{b}'\mathbf{z}$, where \mathbf{b}' is a $1 \times N$ vector of weights (e.g., the population mean is represented by a weights vector whose elements all equal $1/N$). Denoting quantities that are part of the sampled population units with a subscript s and quantities that are part of the unsampled population units with a subscript u , let

$$\begin{pmatrix} z_s \\ z_u \end{pmatrix} = \begin{pmatrix} \mathbf{X}_s \\ \mathbf{X}_u \end{pmatrix} \boldsymbol{\beta} + \begin{pmatrix} \delta_s \\ \delta_u \end{pmatrix}, \quad (2)$$

where \mathbf{X}_s and \mathbf{X}_u are the design matrices for the sampled and unsampled population units, respectively, $\boldsymbol{\beta}$ is the parameter vector of fixed



(a) Assignment of level-one cells to the spatial domain. Grey circles indicate population units.

(b) Assignment of level-two cells to the spatial domain. Grey circles indicate population units.

FIGURE 2 Assignment of level-one and level-two cells to the spatial domain. In (a), each level-one cell is randomly given a level-one address of 0, 1, 2 or 3. In (b), each level-two cell within each level-one cell is randomly given a level-two address of 0, 1, 2 or 3.

effects, and $\delta \equiv [\delta_s, \delta_u]^T$, where δ_s and δ_u are random errors for the sampled and unsampled population units, respectively.

FPBK assumes δ in Equation (2) has mean-zero and a spatial dependence structure that can be modelled using a covariance function. This covariance function is commonly assumed to be non-negative, second-order stationary (depending only on the separation vector [e.g., distance] between population units), and isotropic (independent of direction) (Cressie, 1993). Henceforth, it is implied that we have made these same assumptions regarding δ . Chiles and Delfiner (1999), pp. 80–93 discuss covariance functions that are not second-order stationary, not isotropic or not either. A variety of flexible covariance functions can be used to model δ (Cressie, 1993)—one example is the exponential covariance function. Cressie (1993) provides a thorough list of spatial covariance functions. The i, j th element of the exponential covariance matrix, $\text{cov}(\delta)$, is

$$\text{cov}(\delta_i, \delta_j) = \begin{cases} \sigma_1^2 \exp(-h_{ij}/\phi) & h_{ij} > 0 \\ \sigma_1^2 + \sigma_2^2 & h_{ij} = 0 \end{cases}, \quad (3)$$

where σ_1^2 is the variance parameter that quantifies the spatially dependent (correlated) variability, σ_2^2 is the variance parameter that quantifies that spatially independent (not correlated) variability, ϕ is the distance parameter that measures the distance-decay rate of the covariance, and h_{ij} is the Euclidean distance between population units i and j . In geostatistical literature, σ_1^2 is called the partial sill, σ_2^2 is called the nugget, and ϕ is called the range. We denote θ as the vector of covariance parameters that composes δ . In Equation 3, $\theta = \{\sigma_1^2, \sigma_2^2, \phi\}$.

The parameters in Equation 2 can be estimated using a variety of techniques, but we focus on restricted maximum likelihood (REML) (Harville, 1977; Patterson & Thompson, 1971; Wolfinger et al., 1994). REML is preferred over maximum likelihood (ML) because ML estimates can be badly biased for small sample sizes, due to the fact that ML makes no adjustment for the simultaneous estimation of β and θ (Patterson & Thompson, 1971). Minus twice the REML log-likelihood of the sampled sites is given by

$$\ln |\Sigma_{ss}| + (z_s - X_s \hat{\beta})^T \Sigma_{ss}^{-1} (z_s - X_s \hat{\beta}) + \ln |X_s^T \Sigma_{ss}^{-1} X_s| + (n - p) \ln(2\pi), \quad (4)$$

where $\hat{\beta} = (X_s^T \Sigma_{ss}^{-1} X_s)^{-1} X_s^T \Sigma_{ss}^{-1} z_s$ and Σ_{ss} is the covariance matrix of the sampled sites. Minimizing Equation 4 yields $\hat{\theta}_{\text{reml}}$, the REML estimates of θ . Then $\hat{\beta}_{\text{reml}}$, the REML estimate of β , is given by $(X_s^T \hat{\Sigma}_{ss}^{-1} X_s)^{-1} X_s^T \hat{\Sigma}_{ss}^{-1} z_s$, where $\hat{\Sigma}_{ss}$ is Σ_{ss} evaluated at $\hat{\theta}_{\text{reml}}$.

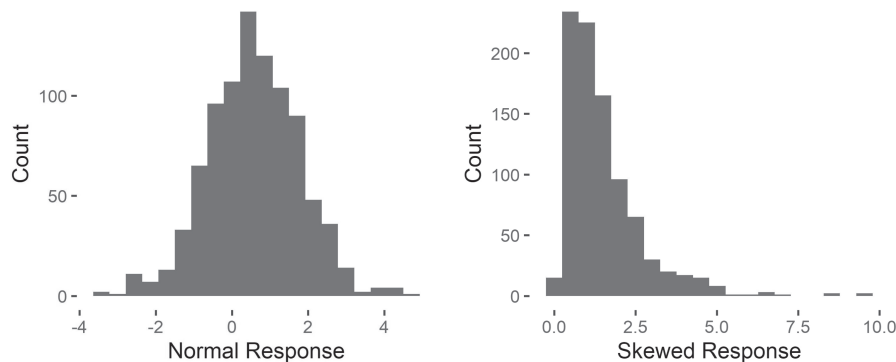
With the model formulation in Equation 2, the best linear unbiased predictor (BLUP) of $f(b'z)$ and its prediction variance can be computed. While details of the derivation are in Ver Hoef (2008), we note here that the predictor and its variance are both moment-based, meaning that they do not rely on any distributional assumptions. Distributional assumptions are used, however, when constructing prediction intervals.

Other approaches, such as k-nearest-neighbours (Fix & Hodges, 1989; Ver Hoef & Temesgen, 2013) and random forest (Breiman, 2001), among others, could also be used to obtain predictions for a mean or total from finite population spatial data. Compared to the k-nearest-neighbours and random forest approach, we prefer FPBK because it is model-based and relies on theoretically-based variance estimators leveraging the model's spatial covariance structure, whereas k-nearest-neighbours and random forests use ad-hoc variance estimators (Ver Hoef & Temesgen, 2013). Additionally, Ver Hoef and Temesgen (2013) compared FPBK, k-nearest-neighbours, and random forest in a variety of spatial data contexts, and FPBK tended to perform best.

2 | MATERIALS AND METHODS

In this section, we describe how we used simulated and real data to investigate performance between simple random sampling (SRS) and GRTS sampling as well as performance between design-based (DB) and model-based (MB) inference. In SRS and GRTS sampling, all population units had equal inclusion probabilities and were selected without replacement. The important distinction between SRS and GRTS is that SRS ignores spatial locations while sampling but GRTS explicitly incorporates them. Together, the two sampling plans (SRS and GRTS) combined with the two inference approaches (DB and MB) yielded four sampling-inference combinations: SRS-DB, SRS-MB, GRTS-DB, and GRTS-MB. For SRS-DB, the Horvitz-Thompson estimator (1) was used to estimate means and the commonly-used SRS

FIGURE 3 Histograms of single realized populations simulated for the normal and skewed responses using the random layout and 50% DRE.



(a) Histogram of a single realized population for the normal response.

(b) Histogram of a single realized population for the skewed response.

variance formula (Lohr, 2009; Särndal et al., 2003) was used to estimate variances. This variance formula is given by

$$\frac{f \left[\sum_{i=1}^n (z_i - \bar{z})^2 \right]}{n(n-1)}, \quad (5)$$

where z_i is the response value of the i th sampled population unit, \bar{z} is the mean of all z_i , n is the sample size, N is the population size, and $f = (1 - n/N)$ (f is often called the finite population correction factor). For GRTS-DB, the Horvitz-Thompson estimator was used to estimate means and the local neighbourhood variance was used to estimate variances. For SRS-MB and GRTS-MB, FPBK was used to estimate means and variances using restricted maximum likelihood. SRS, GRTS sampling, and design-based inference were implemented using the `spsurvey` R package (Dumelle, Kincaid, et al., 2022). FPBK was implemented using the `sptotal` R package (Higham, Ver Hoef, Frank, & Dumelle, 2021).

The simulated and real data were used for distinct objectives. The simulated data were used to compare the sampling-inference combinations across many realized populations (from the same data-generating stochastic process) and random samples. The real data were used to compare the sampling-inference combinations within a single realized population but across random samples. With the simulated data, we were in control of the data-generating stochastic process and the random sampling process. With the real data, we were only in control of the random sampling process (which is typically the case in practice).

2.1 | Simulated data

We evaluated performance of the four sampling-inference combinations in 36 different simulation scenarios. The 36 scenarios resulted from the crossing of three sample sizes, two location layouts (of the population units), two response types, and three proportions of dependent random error (DRE). The three sample sizes (n) were $n = 50$, $n = 100$, and $n = 200$. Samples were always selected from a population size (N) of $N = 900$. The two location layouts were random and gridded. Locations in the random layout were randomly generated inside the unit square $([0, 1] \times [0, 1])$. Locations in the gridded layout

were placed on a fixed, equally spaced grid inside the unit square. The two response types were normal and skewed. For the normal response type, the response was simulated using mean-zero random errors with the exponential covariance (Equation 3) for three proportions of dependent random error (DRE): 0% DRE, 50% DRE, and 90% DRE. Recall the proportion of DRE is represented by $\sigma_1^2 / (\sigma_1^2 + \sigma_2^2)$, where σ_1^2 and σ_2^2 are the DRE variance and independent random error (IRE) variance from Equation 3, respectively. The total variance, $\sigma_1^2 + \sigma_2^2$, was always 2. The distance parameter was always 2/3, chosen so that the correlation in the DRE decayed to nearly zero at 2, the largest possible distance between two population units in the domain. For the skewed response type, the response was first simulated using the same approach as for the normal response type, except that the total variance was 0.6931 instead of 2. The response was then exponentiated, yielding a skewed random variable whose total variance was 2. The skewed responses were used to evaluate performance of the sampling-inference approaches for data that were not normally distributed but were still estimated using REML, which relies on a normal log-likelihood. Figure 3 shows an example of a realized population for the normal and skewed responses using the random location layout and 50% DRE.

In each of the 36 simulation scenarios, there were 2,000 independent simulation trials. Within each trial, a population was simulated according to the specifications of the particular simulation scenario (for the random location layout, locations were simulated separately for each trial). Next, a random SRS sample and a random GRTS sample were selected. Then, design-based and model-based inferences were used to estimate (design-based) or predict (model-based) the realized mean and construct 95% confidence (design-based) or 95% prediction (model-based) intervals. With model-based inference, covariance parameters and the realized mean were estimated (using REML) separately for each trial. After all 2,000 trials, we summarized the long-run performance of the sampling-inference combination in each scenario by calculating mean bias, root-mean-squared error, and interval coverage. Mean bias was taken as the average deviation between each trial's estimated (or predicted) mean ($\hat{\mu}_i$) and its realized mean (μ_i): $\frac{1}{n} \sum_{i=1}^{2000} (\hat{\mu}_i - \mu_i)$, where i indexes the simulation trials. Because each trial had a different realized population, μ_i changed with i . Root-mean-squared error was taken as the square root of the average squared deviation between each trial's estimated

(or predicted) mean and its realized mean: $\sqrt{\frac{1}{n} \sum_{i=1}^{2000} (\hat{\mu}_i - \mu_i)^2}$. Interval coverage was taken as the proportion of simulation trials where the realized mean was contained in its 95% confidence (or prediction) interval. These intervals were constructed using the normal distribution—justification comes from the asymptotic normality of means via the central limit theorem (under some assumptions). Quantifying these metrics is important because together, they give us an idea of the accuracy (mean bias), spread (RMSE) and validity (interval coverage) of the sampling-inference combinations.

2.2 | National Lakes Assessment Data

The United States Environmental Protection Agency (USEPA), states and tribes periodically conduct National Aquatic Research Surveys (NARS) to assess the water quality of various bodies of water in the conterminous United States. One component of NARS is the National Lakes Assessment (NLA), which measures various aspects of lake health and water quality. We focus on analysing zooplankton multi-metric indices (ZMMI) and mercury concentrations in parts per billion (Hg ppb) from the 2012 NLA. For ZMMI, data were collected at 1,035 unique lakes. At less than 10% of lakes, two ZMMI replicates were collected. These were averaged for the purposes of our study so that each lake had one measurement for ZMMI. For Hg ppb, data were collected at 995 unique lakes (there were no replicates). The ZMMI and Hg ppb data are shown as spatial maps and as histograms in Figure 4. The ZMMI data tend to be highest near the coasts, lowest in the Central United States, are relatively symmetric and have a mean of 55.05. The Hg ppb data tend to be highest in the Northeastern United States, lowest elsewhere, are skewed, and have a mean of 103.16 ppb. Also in Figure 4 are separate spatial semivariogram estimates for ZMMI and Hg ppb. The spatial semivariogram quantifies the halved average squared differences (semivariance) of responses whose separation (distance) falls within a separation class. The spatial semivariance is closely related to the spatial covariance, and spatial semivariograms are often used to gauge the strength of spatial dependence in data. Both ZMMI and Hg ppb seem to have moderately strong spatial dependence (Figure 4), as the empirical (estimated) semivariance increases steadily with distance (meaning that observations near one another tend to be more similar than observations far apart from one another).

We studied performance of the four sampling-inference combinations by selecting 2,000 SRS and GRTS samples of size $n = 50$, $n = 100$, and $n = 200$ from the realized ZMMI and Hg ppb populations and then analysing the samples using MB and DB inference. In total, there were six separate scenarios (two responses crossed with three sample sizes). Within each SRS and GRTS sample, design-based and model-based inferences were used to estimate or predict the population mean and construct 95% coverage intervals. With model-based inference, the exponential covariance was assumed, and covariance parameters and the population mean were estimated using REML (separately for each SRS and GRTS sample). We used the same evaluation metrics as for the simulated data: mean bias, RMSE,

and interval coverage. Mean bias was taken as the average deviation between each sample's estimated (or predicted) mean ($\hat{\mu}_i$) and the population mean (μ) (of ZMMI or Hg ppb): $\frac{1}{n} \sum_{i=1}^{2000} (\hat{\mu}_i - \mu)$, where i indexes the simulation trials. Because each trial had the same realized population, μ did not change with i (in contrast to the simulated data, where the realized mean changed with i). Root-mean-squared error was taken as the square root of the average squared deviation between each sample's estimated (or predicted) mean and its population mean: $\sqrt{\frac{1}{n} \sum_{i=1}^{2000} (\hat{\mu}_i - \mu)^2}$. Interval coverage was taken as the proportion of simulation trials where the population mean was contained in its 95% confidence (or prediction) interval. These intervals were constructed using the normal distribution.

3 | RESULTS

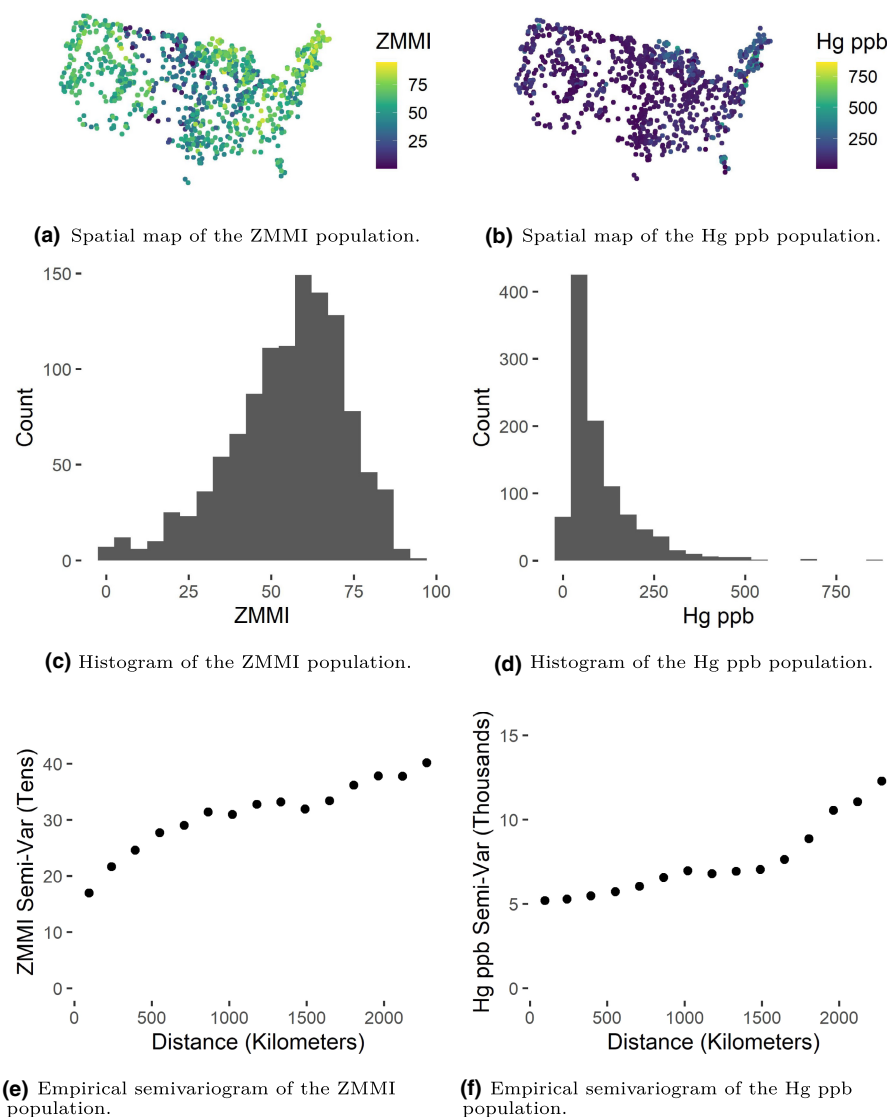
3.1 | Simulated data

Mean bias is nearly zero for all four sampling-inference combinations in all 36 scenarios, so we omit a more detailed summary of those results here. Tables for mean bias in all 36 simulation scenarios are provided in Supporting Information.

We define the relative RMSE as a ratio with numerator given by the RMSE for a sampling-inference combination and the denominator given by the RMSE for SRS-DB. Relative RMSEs for the random location layout are provided in Figure 5. When there is no spatial covariance (Figure 5, 'DRE%: 0%'), the four sampling-inference combinations have approximately equal RMSE. In these scenarios, using GRTS sampling or model-based inference does not generally increase efficiency compared to SRS-DB. When there is spatial covariance (Figure 5, 'DRE%: 50%' and 'DRE%: 90%'), GRTS-MB tends to have the lowest RMSE, followed by GRTS-DB, SRS-MB, and finally SRS-DB. As the strength of spatial covariance increases, the gap in RMSE between SRS-DB and the other sampling-inference combinations widens. Finally, we note that when there is spatial covariance, SRS-MB has a much lower RMSE than SRS-DB, suggesting that the lack of efficiency from SRS is largely mitigated by model-based inference. These RMSE conclusions are similar to those observed in the grid location layout, so we omit a figure and discussion regarding the grid location layout here. Tables for RMSE in all 36 simulation scenarios are provided in Supporting Information.

95% interval coverage for each of the four sampling-inference combinations in the random location layout is shown in Figure 6. Within each simulation scenario, all sampling-inference combinations tend to have fairly similar interval coverage, though when $n = 50$ or $n = 100$, GRTS-DB coverage is usually a few percentage points lower than the other combinations, which suggests that the local neighbourhood variance estimate may be slightly too small for small n . Coverage in the normal response scenarios is usually near 95%, while coverage in the skewed response scenarios usually varies from 90% to 95% but increases with the sample size. At a sample size of 200, all four sampling-inference combinations have approximately 95% interval coverage in both response scenarios for all

FIGURE 4 Exploratory graphics representing populations for the zooplankton multi-metric indices (ZMMI) and mercury concentration in parts per billion (hg ppb) in the 2012 National Lakes Assessment (NLA) data.



DRE proportions. These interval coverage conclusions are similar to those observed in the grid location layout, so we omit a figure and discussion regarding the grid location layout here. Tables for interval coverage in all 36 simulation scenarios are provided in Supporting Information.

3.2 | National Lakes Assessment Data

Mean bias is nearly zero for all four sampling-inference combinations in all six scenarios, so we omit a more detailed summary of those results here. Tables for mean bias in all six simulation scenarios are provided in Supporting Information.

The relative RMSE of both ZMMI (symmetric response) and Hg ppb (skewed response) for all four sampling-inference combinations are shown in Figure 7. GRTS-MB has the lowest RMSE, followed by GRTS-DB, SRS-MB, and then SRS-DB. The difference in RMSE among GRTS-MB and GRTS-DB tends to be quite small. When $n = 50$, SRS-MB RMSE is approximately evenly between SRS-DB RMSE and GRTS-MB RMSE, but for the larger sample sizes ($n = 100$,

$n = 200$), SRS-MB RMSE is closer to GRTS-MB RMSE. Lastly, we note that GRTS-MB, GRTS-DB and SRS-MB all have noticeably lower RMSE than SRS-DB. Tables for RMSE in all six scenarios are provided in Supporting Information.

95% interval coverage of both ZMMI and Hg ppb for all four sampling-inference combinations is shown in Figure 8. When $n = 50$, interval coverage for both responses is too low, though interval coverage is higher for ZMMI (symmetric response) than for Hg ppb (skewed response). When $n = 100$, ZMMI interval coverage is approximately 95% except for GRTS-DB, which has coverage around 92%, while Hg ppb interval coverage ranges from approximately 90% (GRTS-DB) to 93% (GRTS-MB). When $n = 200$, ZMMI interval coverage is approximately 95% while Hg ppb interval coverage ranges from approximately 93% (GRTS-DB) to 95% (GRTS-MB). As with the simulated data, coverages for the NLA data tend to increase with the sample sizes, coverages tend to be higher for symmetric responses than for skewed responses, and the local neighbourhood variance was slightly too small for small n , yielding slightly lower interval coverages than the other sampling-inference combinations.

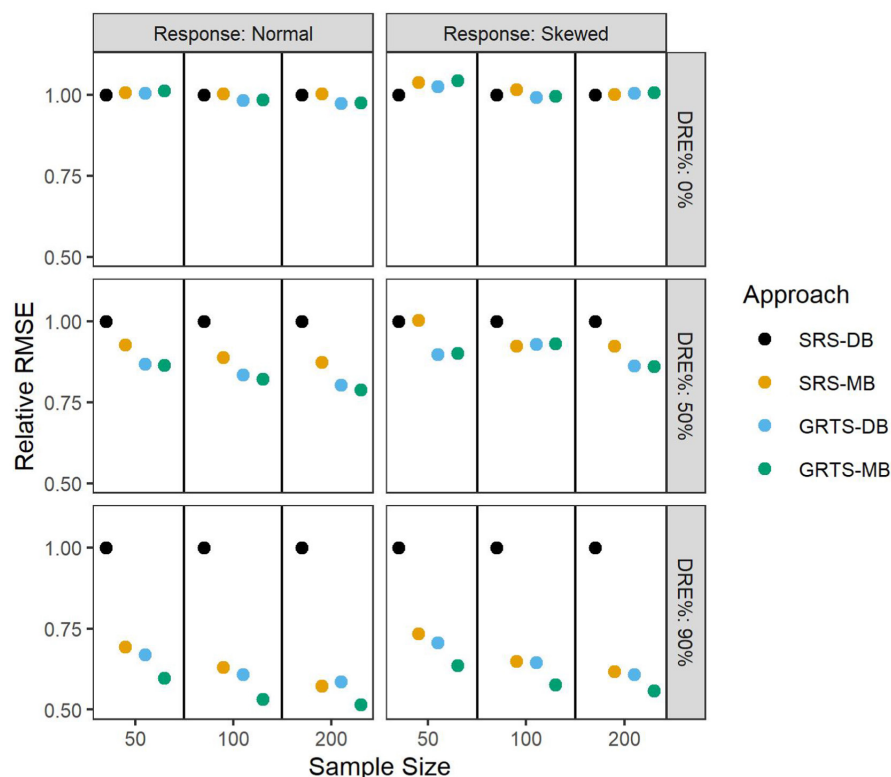


FIGURE 5 Simulated data relative RMSE for the four sampling-inference combinations and three sample sizes in the random location layout. The rows indicate the proportion of dependent error and the columns indicate the response type. The solid, black lines separate the sample sizes.

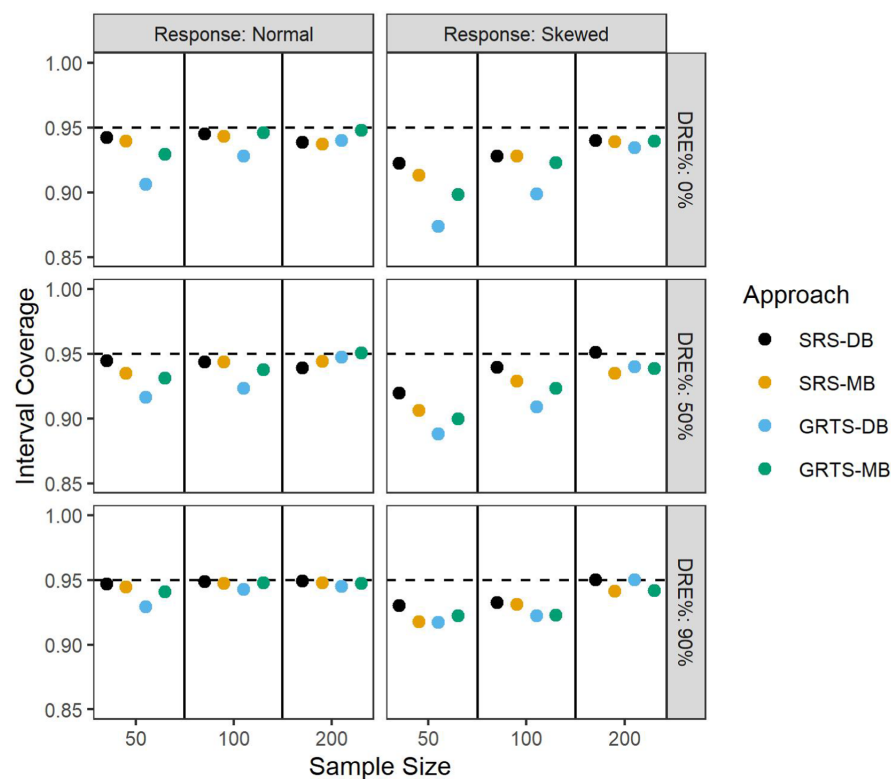


FIGURE 6 Simulated data interval coverage for the four sampling-inference combinations and three sample sizes in the random location layout. The rows indicate the proportion of dependent error and the columns indicate the response type. The solid black lines separate the sample sizes and the dashed black lines represent 95% coverage.

Recall that model-based inference defines interval coverage properties across realized populations. With the simulated data, we evaluated interval coverage across realized populations, but for the NLA data, we evaluated interval coverage within a single realized population. We did find that model-based coverages were similar to

the design-based coverages, however, suggesting that for some realized populations, it is reasonable to heuristically view data from separate random samples as being from approximately separate realized populations. But generally, if model-based intervals constructed from many random samples of a single realized population show

FIGURE 7 NLA data relative RMSE for the four sampling-inference combinations. The columns indicate the response type. The solid, black lines separate the sample sizes.

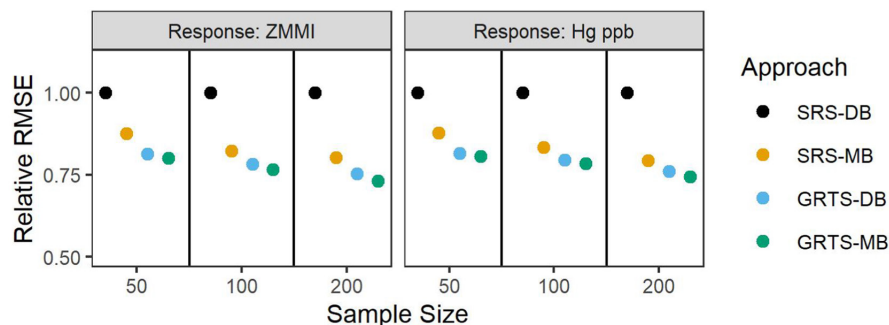
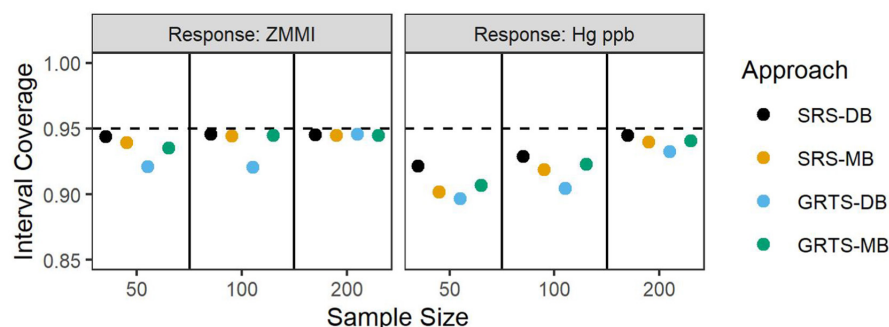


FIGURE 8 NLA data interval coverage for the four sampling-inference combinations. The columns indicate the response type. The solid black lines separate the sample sizes and the dashed black lines represent 95% coverage.



improper coverage, this does not necessarily imply a deficiency in model-based inference. Tables for interval coverage in all six simulation scenarios are provided in Supporting Information.

4 | DISCUSSION

The design-based and model-based approaches to frequentist statistical inference rest on fundamentally different foundations. Design-based approaches rely on random sampling to estimate population parameters. Model-based approaches rely on distributional assumptions to predict realized values of a data-generating stochastic process. Though model-based approaches do not rely on random sampling, random sampling can still be beneficial as a way to guard against preferential sampling. While design-based and model-based approaches have often been compared in the literature from theoretical and analytical perspectives, our contribution lies in studying them for finite population spatial data while implementing GRTS sampling and the local neighbourhood variance estimator. Aside from the theoretical differences described throughout the manuscript, a few analytical findings from the simulated and real data studies were particularly notable. All sampling-inference combinations had approximately zero mean bias. Independent of the inference approach, the GRTS samples yielded lower RMSE than their SRS counterparts. Though GRTS-DB and GRTS-MB generally had very similar RMSE, SRS-MB tended to have much lower RMSE than SRS-DB, suggesting that the model-based inference mitigated much of the inefficiency in RMSE from SRS. As the proportion of dependent random error in the simulated data increased, SRS-MB, GRTS-DB and GRTS-MB become increasingly more efficient (lower RMSE) than SRS-DB. Interval coverage tended to be higher for the

symmetric responses than skewed responses and tended to increase with the sample size. At a sample size of $n = 200$, generally all interval coverages were near the desired value of 95%.

There are several benefits and drawbacks of the design-based and model-based approaches for finite population spatial sampling and inference. Some we have discussed, but others we have not, and they are worthy of discussion. First, we discuss advantages of the design-based approach. Design-based inference is often computationally efficient, while model-based inference can be computationally burdensome, especially for likelihood-based estimation methods like REML that rely on the inverse of a covariance matrix. Design-based inference easily handles binary data through a straightforward application of the Horvitz-Thompson estimator. In contrast, analysing binary data using model-based inference generally requires a logistic mixed regression model, the parameters of which can be difficult to estimate and interpret (Bolker et al., 2009). An advantage of design-based inference is that interval coverage is valid (has the proper coverage rate) as long as (a) the sample is sufficiently large to ensure the statistic's sampling distribution is approximately normal and (b) the variance estimator is consistent (Brus & De Gruijter, 1997; Särndal et al., 2003). This is because with the design-based approach, the sampling plan and inclusion probabilities are specified directly by the researcher. An advantage of SRS-DB not previously mentioned is that it is likely to be valid given the consistency of its variance estimator (Särndal et al., 2003). With the model-based approach, however, interval coverage is unlikely to be valid if the model assumptions made do not accurately reflect reality. Whether model assumptions accurately reflect reality can be a challenging and sometimes impossible question to answer definitively.

Now, we discuss advantages of the model-based approach. The model-based approach can more naturally quantify the relationship

between covariates (predictor variables) and the response variable than design-based approaches. Model-based inference also yields estimated spatial covariance parameters, which help better understand the dependence structure of the process in study. Model selection is also possible using model-based inference and criteria such as cross validation, likelihood ratio tests or AIC (Akaike, 1974). Model-based inference is capable of more efficient small-area estimation than design-based inference because model-based inference can leverage distributional assumptions in areas with few observed population units. Model-based approaches also accommodate unit-by-unit predictions at unobserved locations that can be used to construct informative visualizations like smoothed maps. Brus and De Gruijter (1997) provide a more thorough discussion regarding the benefits and drawbacks of the two approaches. In short, when deciding whether the design-based or model-based approach is more appropriate to implement, these benefits and drawbacks should be considered alongside the particular goals of the study.

There are many extensions of this research deserving of future consideration that include sampling with unequal inclusion probabilities, using different spatially balanced sampling approaches (instead of GRTS), using different spatial data configurations, using different spatial domains like stream networks (Ver Hoef & Peterson, 2010), using different response or covariance structures, and using spatial or external mean trends (which can be defined through covariates).

AUTHORS' CONTRIBUTIONS

All authors conceived the ideas; all authors designed the methodology; M.D. and M.H. performed the simulations and analysed the data; M.D. and M.H. led the writing of the manuscript; and all authors contributed critically to the drafts and gave final approval for publication.

ACKNOWLEDGEMENTS

We thank the editors and anonymous reviewers for their hard work and time spent providing us with thoughtful, valuable feedback which greatly improved the manuscript. The views expressed in this manuscript are those of the authors and do not necessarily represent the views or policies of the U.S. Environmental Protection Agency or the National Oceanic and Atmospheric Administration. Any mention of trade names, products, or services does not imply an endorsement by the U.S. government, the U.S. Environmental Protection Agency, or the National Oceanic and Atmospheric Administration. The U.S. Environmental Protection Agency and the National Oceanic and Atmospheric Administration do not endorse any commercial products, services or enterprises.

CONFLICT OF INTEREST

There are no conflicts of interest for any of the authors.

PEER REVIEW

The peer review history for this article is available at <https://publons.com/publon/10.1111/2041-210X.13919>.

DATA AND CODE AVAILABILITY STATEMENT

This manuscript has a supplementary R package that contains all of the data, code and figures used in its creation. All figures were created using the ggplot2 R package (Wickham, 2016). The supplementary R package is hosted on GitHub and archived on Zenodo. The Zenodo DOI link is <https://doi.org/10.5281/zenodo.6633805> (Dumelle, Higham, et al., 2022).

ORCID

Michael Dumelle  <https://orcid.org/0000-0002-3393-5529>

Jay M. Ver Hoef  <https://orcid.org/0000-0003-4302-6895>

REFERENCES

- Akaike, H. (1974). A new look at the statistical model identification. *IEEE Transactions on Automatic Control*, 19, 716–723.
- Barabesi, L., & Franceschi, S. (2011). Sampling properties of spatial total estimators under tessellation stratified designs. *Environmetrics*, 22, 271–278.
- Benedetti, R., & Piersimoni, F. (2017). A spatially balanced design with probability function proportional to the within sample distance. *Biometrical Journal*, 59, 1067–1084.
- Benedetti, R., Piersimoni, F., & Postiglione, P. (2017). Spatially balanced sampling: A review and a reappraisal. *International Statistical Review*, 85, 439–454.
- Bolker, B. M., Brooks, M. E., Clark, C. J., Geange, S. W., Poulsen, J. R., Stevens, M. H. H., & White, J.-S. S. (2009). Generalized linear mixed models: A practical guide for ecology and evolution. *Trends in Ecology & Evolution*, 24, 127–135.
- Breiman, L. (2001). Random forests. *Machine Learning*, 45, 5–32.
- Brus, D., & De Gruijter, J. (1997). Random sampling or geostatistical modelling? Choosing between design-based and model-based sampling strategies for soil (with discussion). *Geoderma*, 80, 1–44.
- Brus, D. J. (2021). Statistical approaches for spatial sample survey: Persistent misconceptions and new developments. *European Journal of Soil Science*, 72, 686–703.
- Brus, D. J., & DeGruijter, J. J. (1993). Design-based versus model-based estimates of spatial means: Theory and application in environmental soil science. *Environmetrics*, 4, 123–152.
- Chan-Golston, A. M., Banerjee, S., & Handcock, M. S. (2020). Bayesian inference for finite populations under spatial process settings. *Environmetrics*, 31, e2606.
- Chiles, J.-P., & Delfiner, P. (1999). *Geostatistics: Modeling spatial uncertainty*. John Wiley & Sons.
- Cicchitelli, G., & Montanari, G. E. (2012). Model-assisted estimation of a spatial population mean. *International Statistical Review*, 80, 111–126.
- Cooper, C. (2006). Sampling and variance estimation on continuous domains. *Environmetrics*, 17, 539–553.
- Cressie, N. (1993). *Statistics for spatial data*. John Wiley & Sons.
- De Gruijter, J., & Ter Braak, C. (1990). Model-free estimation from spatial samples: A reappraisal of classical sampling theory. *Mathematical Geology*, 22, 407–415.
- Diggle, P. J., Menezes, R., & Su, T. (2010). Geostatistical inference under preferential sampling. *Journal of the Royal Statistical Society: Series C (Applied Statistics)*, 59, 191–232.
- Dumelle, M., Higham, M., Hoef, J. M. V., Olsen, A. R., & Madsen, L. (2022). USEPA/DvMsp: Publication release. *Zenodo*, <https://doi.org/10.5281/zenodo.6633805>
- Dumelle, M., Kincaid, T. M., Olsen, A. R., & Weber, M. H. (2022). Spsurvey: Spatial sampling design and analysis.
- Fix, E., & Hodges, J. L. (1989). Discriminatory analysis. Nonparametric discrimination: Consistency properties. *International Statistical Review/Revue Internationale de Statistique*, 57, 238–247.

- Grafström, A. (2012). Spatially correlated poisson sampling. *Journal of Statistical Planning and Inference*, 142, 139–147.
- Grafström, A., & Lundström, N. L. (2013). Why well spread probability samples are balanced. *Open Journal of Statistics*, 3, 36–41.
- Grafström, A., Lundström, N. L., & Schelin, L. (2012). Spatially balanced sampling through the pivotal method. *Biometrics*, 68, 514–520.
- Grafström, A., & Matei, A. (2018). Spatially balanced sampling of continuous populations. *Scandinavian Journal of Statistics*, 45, 792–805.
- Hansen, M. H., Madow, W. G., & Tepping, B. J. (1983). An evaluation of model-dependent and probability-sampling inferences in sample surveys. *Journal of the American Statistical Association*, 78, 776–793.
- Harville, D. A. (1977). Maximum likelihood approaches to variance component estimation and to related problems. *Journal of the American Statistical Association*, 72, 320–338.
- Higham, M., Ver Hoef, J., Frank, B., & Dumelle, M. (2021). Sptotal: Predicting totals and weighted sums from spatial data.
- Higham, M., Ver Hoef, J., Madsen, L., & Aderman, A. (2021). Adjusting a finite population block kriging estimator for imperfect detection. *Environmetrics*, 32, e2654.
- Hofman, S. C., & Brus, D. (2021). How many sampling points are needed to estimate the mean nitrate-n content of agricultural fields? A geostatistical simulation approach with uncertain variograms. *Geoderma*, 385, 114816.
- Horvitz, D. G., & Thompson, D. J. (1952). A generalization of sampling without replacement from a finite universe. *Journal of the American Statistical Association*, 47, 663–685.
- Lohr, S. L. (2009). *Sampling: Design and analysis*. Nelson Education.
- Patterson, H. D., & Thompson, R. (1971). Recovery of inter-block information when block sizes are unequal. *Biometrika*, 58, 545–554.
- Robertson, B., Brown, J., McDonald, T., & Jaksons, P. (2013). BAS: Balanced acceptance sampling of natural resources. *Biometrics*, 69, 776–784.
- Robertson, B., McDonald, T., Price, C., & Brown, J. (2018). Halton iterative partitioning: Spatially balanced sampling via partitioning. *Environmental and Ecological Statistics*, 25, 305–323.
- Särndal, C.-E., Swensson, B., & Wretman, J. (2003). *Model assisted survey sampling*. Springer Science & Business Media.
- Schabenberger, O., & Gotway, C. A. (2017). *Statistical methods for spatial data analysis*. CRC Press.
- Sen, A. R. (1953). On the estimate of the variance in sampling with varying probabilities. *Journal of the Indian Society of Agricultural Statistics*, 5, 127.
- Sterba, S. K. (2009). Alternative model-based and design-based frameworks for inference from samples to populations: From polarization to integration. *Multivariate Behavioral Research*, 44, 711–740.
- Stevens, D. L., & Olsen, A. R. (2003). Variance estimation for spatially balanced samples of environmental resources. *Environmetrics*, 14, 593–610.
- Stevens, D. L., & Olsen, A. R. (2004). Spatially balanced sampling of natural resources. *Journal of the American Statistical Association*, 99, 262–278.
- USEPA. (2012). *National lakes assessment 2012*. Retrieved from <https://www.epa.gov/national-aquatic-resource-surveys/national-results-and-regional-highlights-national-lakes-assessment>.
- Ver Hoef, J. (2002). Sampling and geostatistics for spatial data. *Ecoscience*, 9, 152–161.
- Ver Hoef, J. M. (2008). Spatial methods for plot-based sampling of wild-life populations. *Environmental and Ecological Statistics*, 15, 3–13.
- Ver Hoef, J. M., & Peterson, E. E. (2010). A moving average approach for spatial statistical models of stream networks. *Journal of the American Statistical Association*, 105, 6–18.
- Ver Hoef, J. M., & Temesgen, H. (2013). A comparison of the spatial linear model to nearest neighbor (k-NN) methods for forestry applications. *PLoS ONE*, 8, e59129.
- Walvoort, D. J., Brus, D., & De Gruijter, J. (2010). An r package for spatial coverage sampling and random sampling from compact geographical strata by k-means. *Computers & Geosciences*, 36, 1261–1267.
- Wang, J.-F., Jiang, C.-S., Hu, M.-G., Cao, Z.-D., Guo, Y.-S., Li, L.-F., Liu, T.-J., & Meng, B. (2013). Design-based spatial sampling: Theory and implementation. *Environmental Modelling & Software*, 40, 280–288.
- Wickham, H. (2016). *ggplot2: Elegant graphics for data analysis*. Springer.
- Wolfinger, R., Tobias, R., & Sall, J. (1994). Computing gaussian likelihoods and their derivatives for general linear mixed models. *SIAM Journal on Scientific Computing*, 15, 1294–1310.
- Yates, F., & Grundy, P. M. (1953). Selection without replacement from within strata with probability proportional to size. *Journal of the Royal Statistical Society: Series B (Methodological)*, 15, 253–261.

SUPPORTING INFORMATION

Additional supporting information can be found online in the Supporting Information section at the end of this article.

How to cite this article: Dumelle, M., Higham, M., Ver Hoef, J. M., Olsen, A. R., & Madsen, L. (2022). A comparison of design-based and model-based approaches for finite population spatial sampling and inference. *Methods in Ecology and Evolution*, 13, 2018–2029. <https://doi.org/10.1111/2041-210X.13919>